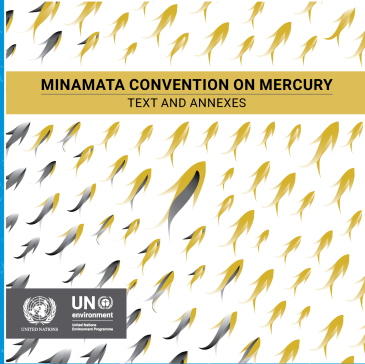


The Minamata Convention in the Caribbean



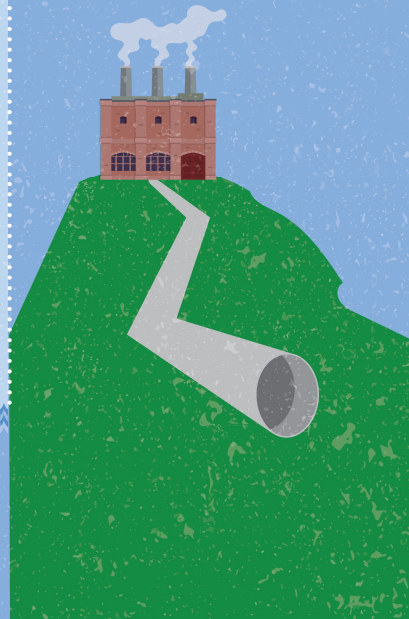
Through the Minamata Convention on Mercury, an increasing number of countries have agreed that mercury, a toxic element found in some consumer products and released by certain human activities, should be managed in an environmentally sound manner to **protect human health and the environment**

Mercury occurs naturally in the earth's crust but human activities have increased mobilisation of the element into the environment, where it persists for generations

Parties to the Minamata Convention have to meet the phase-out requirements for the **manufacture, import and export** of mercury-added products, such as CFL bulbs



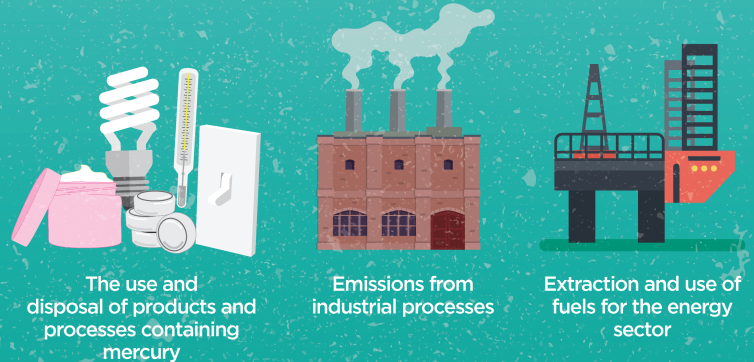
In addition, Parties also have to take steps to reduce and control industrial emissions and releases



In 2017, **Jamaica** and **Saint Kitts and Nevis** became Parties to the Minamata Convention on Mercury. Saint Lucia and Trinidad and Tobago are "actively considering" becoming Parties.

The four countries have already conducted mercury inventories through the Minamata Initial Assessment in the Caribbean project to determine their major sources of mercury releases

Major sources of mercury releases from these inventories included:



The use and disposal of products and processes containing mercury

Emissions from industrial processes

Extraction and use of fuels for the energy sector

Other provisions of the Minamata Convention include:

Recommending environmentally sound storage and disposal methods for mercury waste



Promoting strategies to strengthen national capacities to identify and protect populations at risk, educate citizens, prevent exposure, and treat and care for affected groups

Developing strategies to identify and assess sites contaminated by mercury



The Basel Convention Regional Centre for the Caribbean (**BCRC-Caribbean**)

Developed under the project "Development of Minamata Initial Assessment for the Caribbean (Jamaica, Saint Kitts and Nevis, Saint Lucia, Trinidad and Tobago)"

For more information, visit the **Global Mercury Partnership website** and www.bcrc-caribbean.org