

mercury

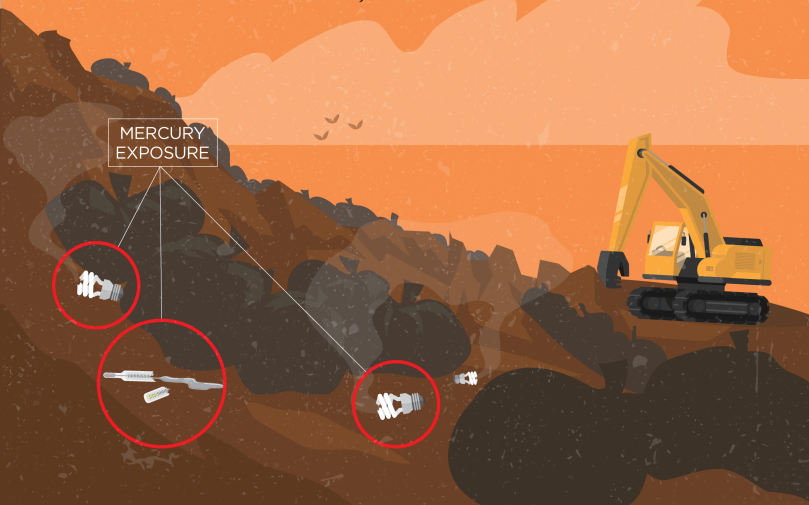
in everyday products



Although **toxic**, mercury is used in a range of manufactured products

These products are typically not harmful to health unless they are broken or disposed of in an environmentally unsound manner

When they are broken, mercury emissions and releases can be released into the air, land and water



Routes of Exposure



Direct skin contact



Inhalation



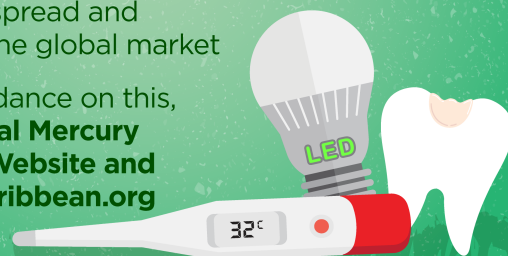
Dental amalgam exposure

By 2020, it is expected that the global manufacture, trade and use of certain mercury-added products will be phased out through the Minamata Convention on Mercury

However, there is need for safe disposal of mercury-containing wastes beyond 2020

Mercury-free alternatives are already widespread and available on the global market

For more guidance on this, visit the **Global Mercury Partnership Website** and www.bcrc-caribbean.org



The Basel Convention Regional Centre for the Caribbean (BCRC-Caribbean)

Developed under the project "Development of Minamata Initial Assessment for the Caribbean (Jamaica, Saint Kitts and Nevis, Saint Lucia, Trinidad and Tobago)"